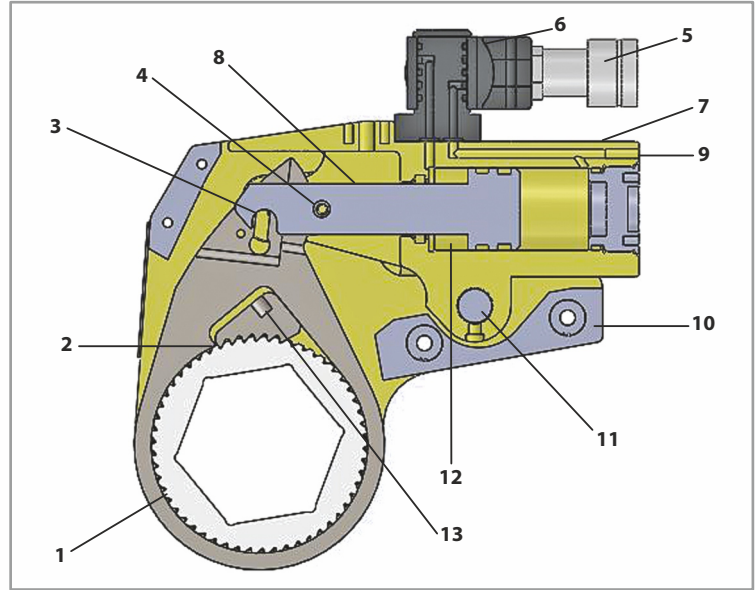


## THL SERIES DIRECT HEX TYPE

### ANNOTATION

- 01) Self-lubricating low Nickel Bronze for drive bush to protect body from wear.
- 02) Fine Ratchet & Pawl for better engagement
- 03) Auto engagement of rod in first stroke
- 04) Slider prevents wear of piston and drive plate
- 05) Leak proof quick connecting coupler
- 06) 360°x180° swivel for better degree of movement
- 07) Round shaped simple cylinder design
- 08) Hard chrome plating of piston rod for wear resistance
- 09) High quality German seals for high pressure design
- 10) Torsion free reaction pad
- 11) Balanced load on side plate due to alignment pin
- 12) Cold worked cylinder bore for longer life and super-finish for long working condition
- 13) Never-Lock drive pawl

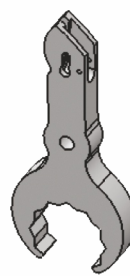
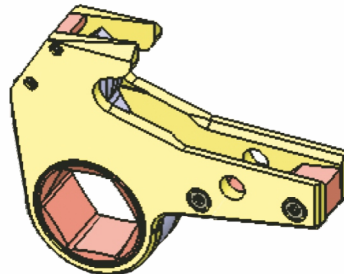
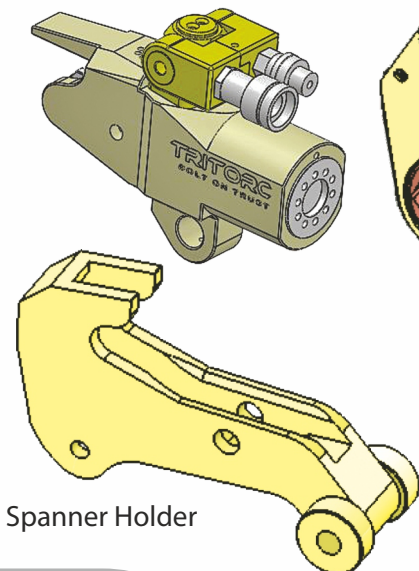


TRITORC THL Series Direct Hex Drive Hydraulic Torque Wrenches are designed for extreme low spaces where normal tools cannot reach. The light weight & compact hydraulic cylinder is made of special Aircraft Grade Aluminum Alloy and the internal spares are made of high Nickel Alloy Steel. There are 5 Models in THL Series ranging from 230 - 45000 Nm. All models have small nose radius which allows the tool to fit in such areas where space constraint is observed.

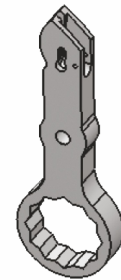
### ACCESSORIES

THL Cylinder

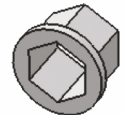
Ratchet Link



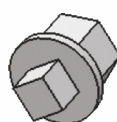
Open End Head



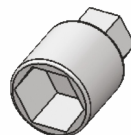
Ring Type Head



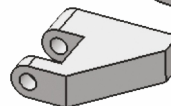
Hex Reducer



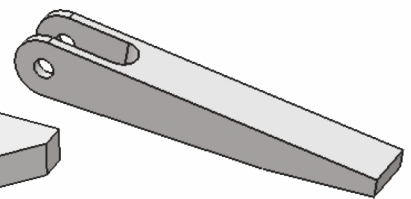
Hex to Square Drive Adapter



Stack Socket



Low Point Reaction Pad

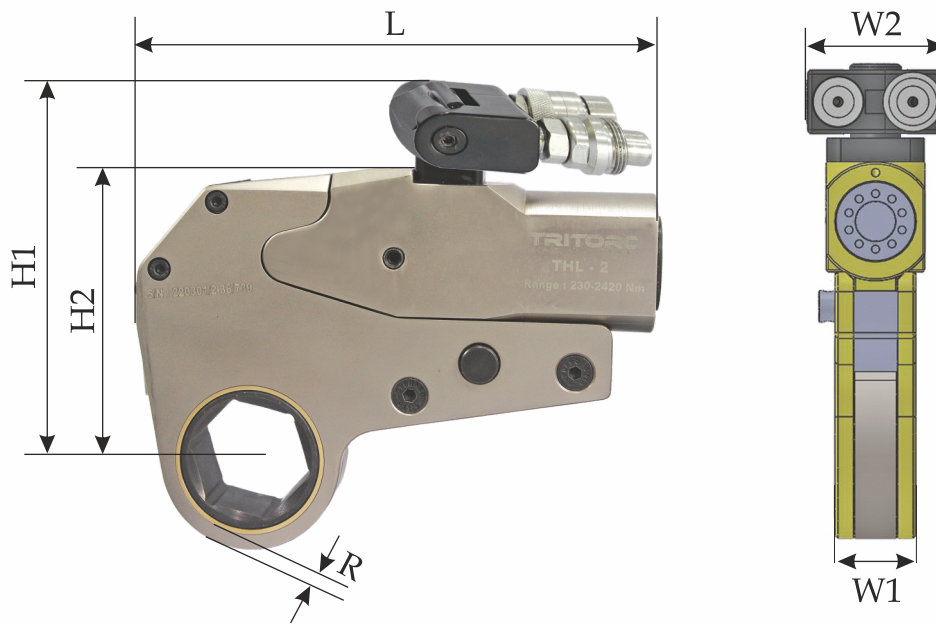


Extended Reaction Arm

# THL SERIES DIRECT HEX TYPE TORQUE WRENCHES

## TECHNICAL DATA

Technical Data	Units	THL-2		THL-4		THL-8		THL-14	THL-32	
Min. Torque	Nm	293	305	608	673	1192	1283	2222	5026	5351
	Ft.Lbs	214	221	443	489	867	932	1615	3652	3888
Max. Torque	Nm	2943	3051	6092	6733	11926	12834	22225	50258	53512
	Ft.Lbs	2137	2217	4426	4891	8863	9323	16147	36511	38875
Across Flat	mm	19-55	55-60	34-65	70-80	41-95	100-105	50-117	110-155	160-175
	Inch	3/4-2.3/16	2.3/16-2.3/8	1.5/16-2.9/16	2.3/4-3.1/8	1.5/8-3.3/4	3.7/8-4.1/8	2-4.1/2	4.1/4-6.1/8	6.1/8-6.7/8
Drive Unit Weight	Kg	1.5	1.5	3.2	3.2	5.3	5.3	9.8	15	15
	Lbs.	3.3	3.3	7	7	11.6	11.6	21.6	33	33
Ratchet Unit Weight	Kg	1.7	1.85	4.1	4.2	8.7	8.8	11.5	32	35
	Lbs.	3.7	4	9	9.2	19	19.4	25	70	77



## DIMENSIONAL DATA

	THL-2		THL-4		THL-8		THL-14	THL-32	
Overall Length L	179	183	223	223	287	287	350	435	447
H1	142	142	184	184	209	209	240	320	320
H2	109.5	109.5	143.5	143.5	185	185	205	290	290
W1	32.2	32.2	40.6	40.6	52.5	52.5	63	83	83
W2	34.4	34.4	49.5	49.5	61.5	61.5	81	93	93
Nose Radius R	22-43	43-46	33-55	55-60	42-76	76-81	52-92	90-116	116-128
R min	9.5	10.5	13.52	13.7	18	18	22	25.7	25.7
R max	12.2	10.75	17	17	20	20	25.5	27.5	27.5